



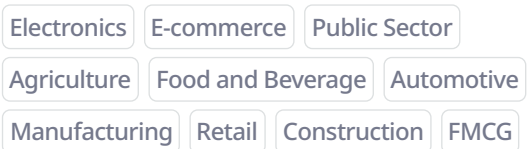
Everything you need for design and optimization of supply chains

What is anyLogistix?

anyLogistix is supply chain design and planning software that combines optimization and high-fidelity simulation in one platform. It helps companies test scenarios, understand trade-offs, and make more confident decisions before execution.

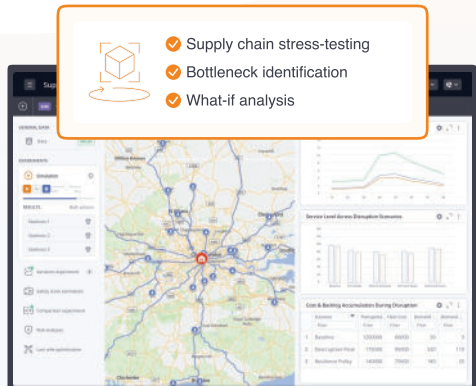
Who can benefit from anyLogistix?

Companies across industries use anyLogistix to evaluate supply chain strategies, uncover improvement opportunities, and make decisions with greater speed and confidence



What you get

- **Confident strategic decisions**
Compare multiple scenarios side by side and choose the supply chain strategy that balances cost, service level, and risk
- **Better network design**
Optimize locations, flows, and inventory policies to build a more efficient, cost-effective supply chain
- **Stronger resilience**
Stress-test your supply chain against disruptions such as supplier failures, tariff changes, and transport delays before they affect your business



Server-based or standalone



Multi-user collaboration



Expert support

Capabilities

Optimization and simulation

Use both methods in one platform to make supply chain decisions that are efficient on paper and robust in reality

Compare strategic scenarios

Evaluate multiple supply chain options side by side to support better planning and investment decisions

Test risk before it hits the business

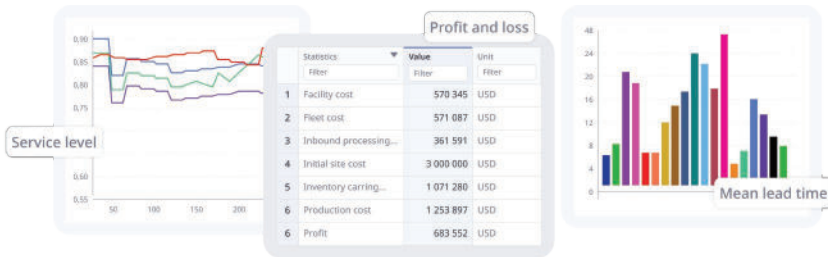
Simulate supplier disruptions, port congestion, and demand volatility to understand impact and prepare better responses

Connect to real data and visualize results

Import data from spreadsheets, databases, and enterprise systems, then use maps, dashboards, and charts to turn analysis into business insight

Build a supply chain digital twin

Model your network in detail, including facilities, transport, and inventory policies



Decision workflow with anyLogistix

1 Define business goals

Set objectives, constraints, and KPIs to focus the analysis on what matters

2 Build the network model

Create a model of your supply chain network, flows, and policies

3 Optimize and simulate scenarios

Test all the possible changes and see how they perform

4 Choose and reuse

Select the best strategy and reuse the model for ongoing planning

Where your business can apply anyLogistix

- Network design
- Inventory optimization
- Bottleneck identification
- Supply and sourcing decisions
- Safety stock estimation
- Risk and disruption tests
- Cost-to-serve analysis
- Transportation optimization

Explore the power of supply chain optimization



Visit anylogistix.com