

SimPath

visualisation. analysis. tracking.



SimPath - The Library for Professional Plant Analysis



Use and Advantage

In addition to the classic simulation and emulation of logistics systems, continuous monitoring and optimization of real systems are increasingly moving into focus.

Especially in complex systems it is important to perform a detailed analysis of the material flow, to provide sophisticated visualization and a corresponding dynamic performance measurement system that can be used for real and simulation data as well as planning data.

The SimPath Library allows materials handling systems to be created easily in 3D and data to be imported quickly. Supplemented by an SQLite inMemory database and a variety of support functions, even complex systems with very high data volume can be handled with the SimPath library.

With SimPath, material flows can be analysed down to a very high level of detail, material streams can be visualized and material flow information depicted. Furthermore, project-specific requirements can be integrated easily through clearly structured interface functions.

The following features are available:

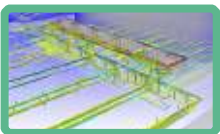


Replay/Trace

Replay tracefiles and mark exceptions on transport unit level

Visualize routing and time consumption for each transport unit on conveyor system

Routing

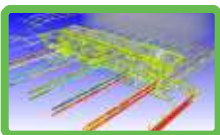
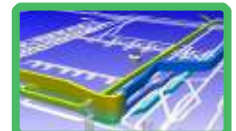


Sankey

Visualize material flow throughput per conveyor segment and hour

Visualize material flows to and from select message points separated by source and destination

Statistics



Loops/Cycles

Review looping transport units per conveyor segment and hour

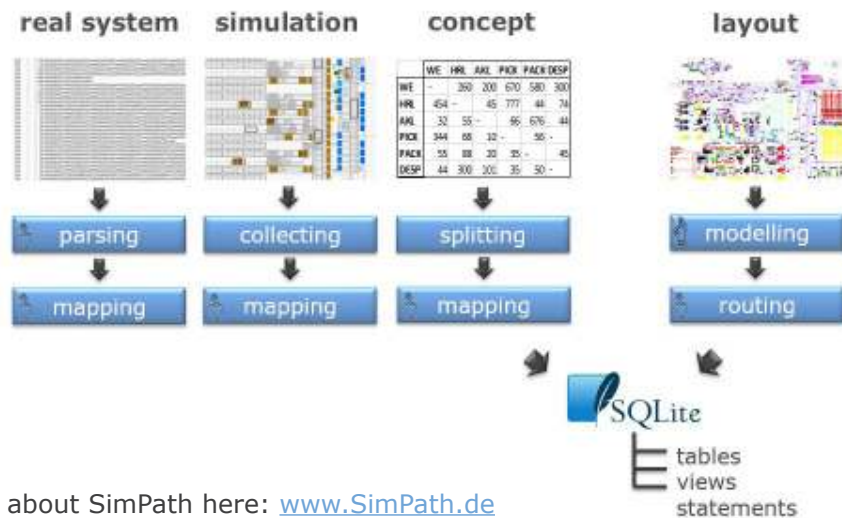
Display system information by groups and navigate to specific reporting points

Information



The SimPath concept is not only focused on analysing real plants. It also provides the opportunity to:

- Analyse and visualize data generated by a simulation model. The required data collector objects already exist and can be easily integrated into the simulation model.
- Map data from the abstract material flow chart of a planning concept to the plant



➤ More information about SimPath here: www.SimPath.de

Why SimPlan?

- Objective and independent analysis
- Detailed knowledge of logistics and production processes with more than 25 years of project work
 - Development and use of standards
 - Continuous further development of simulation topics through research and development
- Excellent resources for prompt responses to your questions
- Close cooperation and project integration with high on-site quota
- Development of innovative solutions, efficiently solving challenges during project work

Contact us:

SimPlan Group

Headquarters

Sophie-Scholl-Platz 6
63452 Hanau
GERMANY

Phone: +49 6181 40296-0
Fax: +49 6181 40296-19
Email: info@SimPlan.de
Web: www.SimPlan.de

Offices Germany

Braunschweig • Bremen • Dresden •
Holzgerlingen • Munich • Regensburg

SimPlan Integrations GmbH, Witten (GER)
SimPlan Systems GmbH, Maintal (GER)
induSim GmbH, Langenau (GER)

International Offices

SimPlan Austria, Neufelden / Wien
Sales office China, Shanghai