

## Building Blocks für Plant Simulation

# VSM - Value Stream Mapping



## Visualization, analysis and improvement of dynamic value chains

Value Stream Mapping is an established method for examining economic value creation in manufacturing and identifying, reducing and elimination non-value adding processes and operations. Value Stream Mapping is a modern method of process optimization based on the methods of Lean Management. The goal is to simply and quickly optimize the value chain. The VSM library, developed by SimPlan, supports this.

### Goals and benefits of Value Stream Mapping

- Increase awareness of production variability
- Increase production quality
- Increase production rates
- Increase production efficiency



Aim to optimize production resources, control layout, and lot sizes to ensure consistent production flow without buffer inventory buildup while maintaining quality of order entry and delivery.

### Why should you perform Value Stream Mapping in Plant Simulation?

- Reduction of costs for data acquisition by reducing the number of objects describing the processes by predefined logic blocks.
- Reduction of the analysis effort through automated modules.

Simulation allows users to examine the dynamic effects of the Value Stream Mapping that remain hidden in static, paper-based mappings of the value chain.

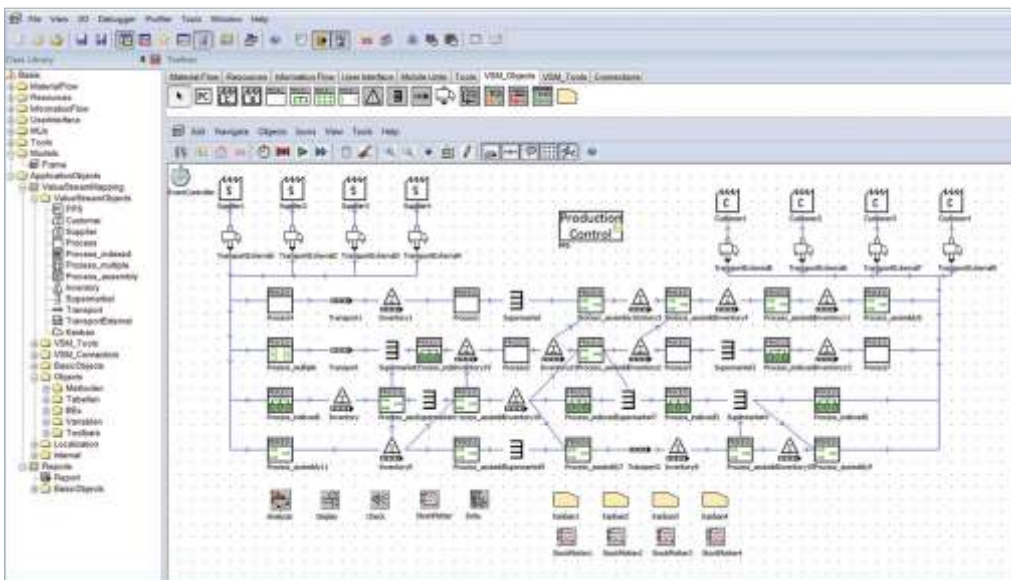


Traditional, static Value Stream Mapping is extended to include the critical time element of inventory availability. This allows you to map dynamic fluctuations in daily production due to batch sizes, set up processes, product variations or other disruptions.

Dynamic material flow simulation in Plant Simulation allows you to reduce the number of products in production and thus the capital required for robust production, and to ensure that natural fluctuations in production do not affect delivery capability.

## Value Stream library in Plant Simulation

- Predefined symbols based on the general standard
- Fast and efficient modeling of typical scenarios through block libraries
- Results can be displayed in diagrams and graphics
- Analysis of throughput, resource utilization and bottlenecks
- Predefined dialogs with configurable user objects



Interface VSM  
(Source: Siemens Industry Software)

To make working with the VSM library even easier, we have developed the **SimVSM app**. You can download it from any store.

**You can find more details at [www.SimVSM.de](http://www.SimVSM.de).**



## Contact us

### SimPlan AG

#### Headquarters

Sophie-Scholl-Platz 6  
63452 Hanau  
GERMANY

Telephone: +49 6181 40296-0  
Fax: +49 6181 40296-19  
E-Mail: [info@SimPlan.de](mailto:info@SimPlan.de)  
Web: [www.SimPlan.de](http://www.SimPlan.de)

#### Offices Germany

Braunschweig • Bremen • Dresden •  
Holzgerlingen • Munich • Regensburg

SimPlan Integrations GmbH, Witten •  
SimPlan Systems GmbH, Hanau •  
induSim GmbH, Langenau

#### International Offices

SimPlan Austria, Neufelden / Vienna  
Sales Office China, Shanghai