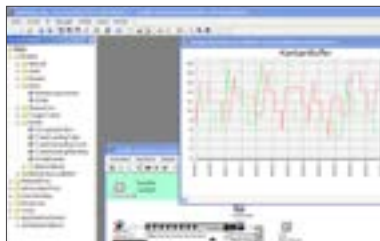


## Special offer: Plant Simulation training and International User Conference



### Visualization, Analysis and Optimization of processes

Plant Simulation is a standard software for the simulation of highly complex production systems and processes.

The software is characterized by object-oriented, graphical and integrated modeling, simulation and animation of systems and processes. Plant Simulation is an important component and the entry tool into the field of digital factories.

### Combine your participation in the Plant Simulation Worldwide Conference with a training at SimPlan

The Plant Simulation worldwide user conference takes place at Siemens Stuttgart every year. This is a good opportunity to combine the visit of the conference with the participation in a basic or advanced Plant Simulation training at the largest and most experienced Plant Simulation service provider SimPlan.

#### Some information from Siemens about the conference:

This free-of-charge, three-day event will include a visit to a local manufacturer, exciting new product information, case studies, and hands-on technical training sessions. As with last year's event, the conference will take place in the Siemens convention center close to our development office. This allows you to meet the team behind the software, and get valuable hints from the experts.

Read more at this Siemens PLM website: [Link](#)

### Program Part 1: Participation at Plant Simulation User Conference / Oct 14th-17th

- Location:** Siemens PLM, Stuttgart (Germany)
- Monday, Oct 14th:** Pick up at Frankfurt Airport and shuttle service to Stuttgart  
Check-in at Stuttgart hotel
- Tuesday, Oct 15th:** Plant Simulation User Conference Day 1 - Tour to a local manufacturer (fully booked at Siemens). There will be a presentation and onsite visit at the new Hugo Boss distribution centre, exclusively reserved for SimPlan customers. The Boss outlet centre is nearby and can be visited afterwards.
- Wednesday, Oct 16th:** Plant Simulation User Conference Day 2
- Plant Simulation case studies and software feature presentations
  - The conference officially commences with presentations from customers and the development team, including a new Plant Simulation software feature presentation.
- Thursday, Oct 17th:** Plant Simulation User Conference Day 3
- Technical presentations and training
  - The conference will conclude with technical training, including in-depth version features, partner libraries, efficiency tools, tips and tricks, and special industry sessions. As always, there will be a Q&A session at the conclusion of the conference.

### Program Part 2: Transfer to Hanau and SimPlan information day / Oct 18th-20th

- Location:** SimPlan AG, Hanau (Germany)
- Friday, Oct 18th:** Shuttle service from Stuttgart to Hanau  
SimPlan information day: state-of-the-art simulation, use cases, complementary software – SimAssist, VR  
Check-in at Hanau hotel
- Saturday, Oct 19th and Sunday, Oct 20th:** Free time at leisure - Possible options: sightseeing, shopping, culture.  
We will prepare some options for you.

## Program part 3: Plant Simulation Training

**Location:** SimPlan AG, Hanau (Germany)  
**Monday, Oct 21st to  
Friday, Oct 25th:** Participation at Basic or Advanced Training



We have been a Siemens PLM Software partner for more than 20 years and became a Silver Smart Expert Partner. Take advantage of our more than 25 year's experience and participate in a SimPlan training. Our experts can give you valuable tips and practical advices for the use of Plant Simulation.

### Basic & Intermediate Training

#### Training agenda

- Day 1: Plant Simulation Basic Training – Basics
- Day 2: Plant Simulation Basic Training – SimTalk, Interfaces
- Day 3: Plant Simulation Basic Training – Interfaces, Debugger, Data Capture Examples from Practice
- Day 4: Proceed in a simulation project – from kick-off meeting to final presentation
- Day 5: Modelling practice / assistance with your simulation project

#### Training Software:

Plant Simulation V15.0

#### Dates:

5 days, Oct 21st – 25th 2019

#### Location:

SimPlan AG, Hanau (Germany)

#### Other Conditions:

Minimum number of participants: 3

### Advanced Training

#### Training agenda:

- Day 1: resources / machine operators interaction of machine operator, operator pool, broker, importer, shift calendar
- Day 2: interfaces / statistic interfaces: ODBC, Excel, Socket, ActiveX
- Day 3: vehicles interaction vehicle, routes, destinations
- Day 4: introduction to Simtalk Overview – fields of application for Simtalk Method structure, constants/variables, data types, operators, control structures, pre-defined functions General simulation control – init, reset, autoexec, endSim Material flow control with SimTalk Methods as user defined attributes Information flow design, data management
- Day 5: Simtalk practice Implementation of simple material flow control and data management methods

Of course it is possible to book the Basic or Advanced training without participation at the Plant Simulation User Conference. If this is your choice you can decide if you want to manage your accommodation and shuttle service on your own or book our **Service package training**.

This package includes the accommodation from 20th to 26th October 2019 in Hanau, all meals and shuttle service from and to Frankfurt Airport.

Please bring your own notebook and give an information to us, if you have an installed Plant Simulation license or need a test license.

## **Training Offers & Packages**

<b>1. Basic training (program part 3)</b>	2.500 €
5 days, Location: SimPlan AG, Hanau incl. training, material, lunch   excl. flight, hotel, shuttle, breakfast, dinner	
<b>2. Advanced training (program part 3)</b>	3.500 €
5 days, Location: SimPlan AG, Hanau incl. training, material, lunch   excl. flight, hotel, shuttle, breakfast, dinner	
<b>3. Service Package Training</b>	1.800 €
Accommodation from 20th to 26th October 2019 in Hanau, German hotel category: 4 stars, Breakfast and dinner, Shuttle service to the training location Hanau and from/to Frankfurt Airport	
<b>4. Combined package 1 incl. Plant Simulation User Conference and Basic training (see program part 1, 2 &amp; 3)</b>	5.300 €
Accommodation from 14th to 26th October 2019, German hotel category: 4 stars, Breakfast, lunch and dinner, Shuttle service from Frankfurt Airport to Stuttgart (Plant Simulation User Conference) + afterwards from Stuttgart to Hanau, Participation at Plant Simulation User Conference, Basic training at Hanau, Shuttle service to training location and back to Frankfurt Airport, not incl. flight	
<b>5. Combined package 2 incl. Plant Simulation User Conference and Advanced training (see program part 1, 2 &amp; 3)</b>	6.300 €
Accommodation from 14th to 26th October 2019, German hotel category: 4 stars, Breakfast, lunch and dinner, Shuttle service from Frankfurt Airport to Stuttgart (Plant Simulation User Conference) + afterwards from Stuttgart to Hanau, Participation at Plant Simulation User Conference, Advanced training at Hanau, Shuttle service to training location and back to Frankfurt Airport, not incl. flight	

*10% discount for the second and further participants*

**Are you interested in booking this special training offer in Germany?  
Or do you have any questions about the details?**

**[Online registration form](#)**

**You can address all your questions to:**

Inka Meerwein, Marketing  
+49 6181 40296-2503  
training@SimPlan.de

**SimPlan AG**

Sophie-Scholl-Platz 6  
63452 Hanau / Germany